



Geneva Point Center

Newsletter: Summer 2009

Available in full color at www.genevapoint.org

New Cabins Spring Up

In May, the much anticipated new cabins began to rise out of the mud and snow. The four cabins stand on the site of the old Staff House that was demolished last fall. The new cabins will provide a vast improvement in living conditions for GPC summer staff, and will also accommodate families, conference attendees, Elderhostel participants, youth groups, volunteer work groups and others during the pre and post summer weeks. Carefully designed, each cabin will house eight people in simple but comfortable style. The cabins surround a central green space with a fire ring at the center, all intended to make it feel like a little village and to nurture good community.

The project is supported by gifts and pledges totaling almost \$110,500, which is approximately 90% of the currently anticipated cost of developing the site and constructing the four cabins.



The project is also supported by volunteers representing a cross-section of GPC groups. Working closely with David Barnard of GPC facilities staff, volunteers have been with this project right from the start, assisting with the design of the cabins and the demolition of the Old Staff House last fall. Over the winter months, much of the wood framing was prefabricated in the Barn, making it possible to move quickly this spring. The Rev. David Williams organized and led a group of 17 mostly UCC (United Church of Christ) volunteers that put in 256 hours of labor over a week long effort in mid-May. By the end of the week, the walls of all four cabins were up and roofs were starting to appear. Other volunteers came from NNESRE (Northern New England School of Religious Education) and Camp Aurora, and included several former GPC staff members and their families.

As built, the seasonal cabins will be attractive, comfortable, energy efficient and easy to maintain for many years. With a view to the future, the new cabin development has sites, electrical, and septic accommodations for two additional cabins. The electrical systems and site layout were designed so that solar or another alternative renewable energy sources can more easily be added in the future. The cabins are also making prominent use of wood salvaged from the Old Staff House as well as wood from tress harvested at GPC a few years ago. Other notable features of the design and construction include the use of local suppliers for building materials, a site plan and windows that take advantage of passive solar heat, the use of high quality long life materials like concrete siding, high efficiency water heating systems and the use of high efficiency florescent lighting.



The new cabins are scheduled to be in service by mid-July and house this year's summer staff. Work to put the finishing touches on the cabins as well as landscaping the area will continue into the summer.



It is not too late to suggest names for an individual cabin or for the entire new cabin development.

On Saturday, October 3, 2009, the cabins will be dedicated in a special service as part of the 90th Anniversary festivities.

Geneva Point Center

Board of Directors

Robin Thomas Soller, *President*

Bryan Gould, *Vice President*

Lisa Garcia, *Treasurer*

Tom Westin, *Recording Secretary*

Jane Foster, *Corporate Secretary*

Eric Benson
Barbara Bullard-Koonz
Debbie Eskra
Miriam Jensen
Bob MacArthur
Marcia Steckler
Dick Stuart
Michael Wachs
Dick Weyrick
Dave Williams

Staff

Peter A. Claypoole

Executive Director

Phone ext: 202

Email: pclaypoole@genevapoint.org

Greg Widman

Operations

Phone ext: 204

Email: greg@genevapoint.org

Natalie Hebdin

Registrar and Guest Relations

Phone ext: 203

Email: natalie@genevapoint.org

David Barnard

Construction and Maintenance

Phone ext: 206

Email: david@genevapoint.org

Geneva Point Center

108 Geneva Point Road
Moultonborough, NH 03254

Phone: (603) 253-4366

Fax: (603) 253-4367

Website: www.genevapoint.org

From our President...

Dear Friends,

As we celebrate our 90th anniversary this year, there are many cherished moments that testify to the gift Geneva Point has been to so many people. We hope to continue in this tradition with new friends each year. Countless lives have been touched and transformed, and God has been very near to this place and our guests, bringing renewal and joy.



If you are reading this, then you have a connection to this holy place, even if it is only your first encounter. We hope you will be one of the thousands who spend time here this year. Together, we make up the family of those who are called to care for GPC, and to ensure that it continues on as a blessing for the future. To that end, the Board of Directors has been working diligently on a number of fronts. In October, we passed a Strategic Plan, which puts into place five core strategies. Each board committee has certain responsibilities for action items, and all have been working hard to keep us moving forward. Among the progress we have made already is the building of the Staff Cabin Community, and the possibilities that come with that project. A newly revised personnel manual was approved in May, and we are working to improve many other areas of our organization. We finished our last fiscal year, ending March 31, 2009, on a positive note; yet, we continue to be careful stewards of our funds, even while we work to make much needed repairs and add to the comfort and safety of our guests.

By far our most successful and joyful accomplishment was the hiring of Peter Claypoole to be our new Executive Director. Peter began on February 1, and has been on a steep learning curve to be ready for the season that is just beginning. His previous experience has been a huge gift to us, and his expertise and approach are helping us strengthen our foundation and move us forward into a very exciting and healthy future. We are so delighted for Peter's presence with us, and thankful for his openness to take on this challenge, to share his many skills, and for his commitment to Geneva Point. I hope you will have a chance to recognize how blessed we are in his leadership.

We invite you to join us for the next stage of this journey. I ask you to consider supporting us in several ways: pray, give, celebrate. Always, we invite your prayers for this ministry, for the staff who share of themselves and their gifts so generously, for our volunteers, who invest a great deal to provide a wonderful experience for others, and for our guests, that they might be touched by the spirit of this place, and claim the power which enables each of us to follow this encouragement: From this place, go build a better world. We invite you to become a supporting member or renew your membership in GPC for this year, by making a generous donation to support this place and help us create a stronger GPC. Giving of your time is also a welcome option. Help is appreciated for a few hours, or a longer time frame. We also hope you will come and share in the festivities of the 90th Anniversary celebration on October 3. Help us to give thanks for the rich history of Geneva Point Center, and to rejoice in our many blessings. Thank you for all the ways you strengthen GPC for today and tomorrow.

Faithfully

Robin Thomas Soller, President, Board of Directors



Welcome to GPC this Summer

Weather, The Economy & Recognizing Value

The 2009 season is already in full swing. It will certainly be a busy summer. We anticipate many of the long standing conferences, groups and families to be here again. We also look forward to some new faces as well. However, GPC has not been immune to the effects of the prevailing economic stress and the impact of last winter's harsh weather. A few groups have cancelled and a few expect lower numbers. On an optimistic note, many families and groups see their members recognizing more than ever the value of their summer experience on Lake Winnepesaukee.

The 2009 Summer Staff

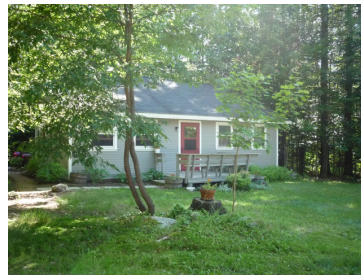
The 2009 Summer Staff has come together well. Returning guests may notice that the staff is slightly fewer in number and a little differently organized. Once again there will be a strong group of international staff, including individuals from Russia, France, Romania, Hungary, Poland, Ukraine and the United Kingdom. Of the 40 or so seasonal staff, about 45% will be from other countries.

What do you think?

This summer, GPC will institute a new system for gathering and using the input of guests. Visitors will find themselves encouraged to complete two quick and easy forms where they can rate and comment on various aspects of their experience while they are on-site. One form will be specifically about GPC's food service and the other will cover a more comprehensive set of issues from lodging, housekeeping to other areas of importance to guests. Since many of our best thoughts come with a little time and perspective, GPC is also developing a system for an on-line survey. This will be a more comprehensive survey that can be completed at your home computer when convenient. Our hope is to engage a larger percentage of our guests in directly sharing their opinions about Geneva Point and the quality of their experiences.

Our Mission

Through the beauty of our natural setting and inclusive hospitality, Geneva Point Center provides place to rejuvenate, nurture relationships and prepare to build a better world.



A Word from the Red House

It has been a very busy few months since I began my service as Executive Director of Geneva Point Center. It is a great privilege to work with the GPC Board, staff and membership to care for this extraordinary resource, address its challenges and capitalize on opportunities to build a vibrant and sustainable future. One major factor in my decision to accept this position was the exemplary effort made by the Board of Directors to develop and begin to institutionalize a rational and comprehensive strategic plan. The other big factor was something less tangible. From my first encounters, I sensed a distinct and deeply shared sense of connection, commitment and spirituality.

Being an ecumenical conference center is an interesting thing. Most everyone who comes here has their own identification with the place and especially with the specific group they are a part of, but they do not really know much about the thousands of other people and hundreds of other events that make up the whole GPC community. Having made that observation, I am excited about the opportunities for building bridges to better connect the many branches of our GPC family. That increasing strength will help assure a Geneva Point future of organizational good health that empowers us to achieve our mission of stewardship, hospitality and service. Two things you can do to build bridges include becoming a member of Geneva Point Center and take part in the 90th Anniversary festivities.

Peter Claypoole
Executive Director

P.S. For anyone does not know, the Red House is the on-site residence of the Executive Director. For those who do know that, I am pleased to report that the Red House will soon actually be red again.

In Memory of Birdie Blair

Roberta "Birdie" Blair died on April 13, 2009 at the age of 79. Birdie was a long-time and well-loved member, volunteer and all around supporter of GPC. She was born in Stoneham, Mass., on February 2, 1930, and lived in Chester, NH since 1964. Birdie was a nurse and was also very active in her church, community, and in her volunteer service at GPC. She is survived by her daughter, Cheryl Blair Widman and her husband Greg Widman (GPC's Director of Operations), as well as her son, grandchildren, nieces and nephews. Birdie is remembered here at GPC and elsewhere for her abundant enthusiasm for life, beautiful singing voice and the hugs she gave to absolutely everyone. A memorial service was held on April 20, 2009, at the Chester Congregational/Baptist Church. The service was well attended by members of GPC's staff (including three former or current Executive Directors), current and former members of the Board of Directors and other members of the GPC Community. Birdie's family has requested that any memorial donations be made to Geneva Point Center.



Buildings & Grounds



Refurbished Fireside Dining Room at the Inn

The new cabins are the most prominent evidence of improvements to GPC buildings and grounds, but they are not the only projects that have been either completed or planned since last summer. On top of all the work that goes in to re-opening all the buildings, waterfront, water systems and equipment, a program of special projects is also ongoing.

The Inn

Thanks to a major effort by volunteers and staff, the Fireside Dining Room at the Inn will look, smell and feel brighter, fresher, cleaner and dryer. The floor in particular will be noticed by our returning guests as well as the new yellow and white color scheme. The lounge also received a lot of attention, especially the ceiling and floor.



Repairs and Fresh Paint for the Lobby at the Inn

Lakeview Lodge

The lodge has a new roof and is scheduled for new carpeting in some rooms, window repairs and exterior work as well.

The Office

The Abbot Administration Building (aka the Office) is looking very different with a new green metal roof. The new roof is not only green, it also has a much steeper pitch and a lot more insulation to make the building more energy efficient. The old breezeway entry was removed along with some of the other exterior appendages to the building. Later this year, we hope to give it a new paint job as well.



New Roof for the Abbot Administration Building

The GPC Wish List

If anything on this list is just taking up space in your home or garage, maybe it belongs at Geneva Point. Contact the GPC office to let us know if you would like to donate anything like this. All items may be new or used, but must be in good working condition.

- Hand tools for yard work, plumbing, electrical, carpentry, auto repair, interior and exterior painting.
- Heavy Duty Golf Cart
- Chain Saw
- Pipe Staging (scaffolding)
- Heavy Duty Extension Ladder
- Walk Behind Lawn Mower
- York Rake for Three-Point Tractor Hitch
- Walk Behind Snow Blower
- Paint Sprayer
- Weed Wacker/Clearing Saw
- Cordless Tools
- Circular Saw
- Drill/Driver
- Saws
- Nail Gun
- Portable Generator
- Dump Trailer

For more information about any of these needs, contact Greg Widman at the GPC Office. If you do not have any of these items around the house but would like to support Geneva Point's ongoing maintenance efforts, please make a **Friends of Winni** gift.

Top Priorities for Maintenance and Improvement You Can Help and Friends of Winni Can Help

With over 80 structures, three beaches, recreational facilities, lawns, trails, forest land and electrical, water and septic systems spread over nearly 200 acres of property, GPC always has a very long list of work to do and things to pay for. At the top of that long list are our current priorities for maintenance and improvement, which include Lake View Lodge, the Inn, Cottage F, Gibbs House and the Chapel. You can help attend to those priorities by volunteering your time and skills and by making your 2009 Friends of Winni gift.

2009 Annual Membership

It is time to renew or become a member!

Geneva Point Center Inc. is a non-profit corporation that exists to fulfill a mission of hospitality to groups and individuals seeking renewal of spirit, body and mind. It is owned by its members, who elect a Board of Directors to oversee the management of Geneva Point. As a member of the corporation, you are entitled to attend and vote at the annual meeting and receive a copy of the annual report. To be a member in good standing, all you need to do is complete a membership application and send it in with your annual membership contribution. A response envelope is included with this newsletter. Annual meetings are typically held in October. This year's Annual Meeting will be held on Saturday, October 3rd.

Board and Committee Membership— Seeking Qualified Persons

GPC constantly seeks talented, dedicated, resourceful individuals to become members of the Board and to serve on the various committees of the Board. You can serve on a committee without being a member of the Board. To be a Board member you must be a member in good standing of the corporation and be elected at the Annual Meeting. The Board's Governance Committee invites recommendations for board and committee members. For more information about board or committee membership, to volunteer or recommend a qualified person, contact the Executive Director or the Chair of the Governance and Personnel Committee.

GPC Board Committees

- Governance and Personnel
- Hospitality
- Finance and Budget
- Property
- Financial Development

Supporting Geneva Point

2009 Annual Membership Goal, \$6,000
2009 Friends of Winni Goal, \$20,000

Tomorrow is Made Possible by Today's Giving

Fees for services generate most of the money that supports the annual operation of Geneva Point Center, but it does not do it all. So, each year we call on all members and friends to support the general operation of GPC by making annual membership contributions. This year's membership goal is \$6,000. The other yearly support initiative is the Friends of Winni campaign which raises money that specifically supports the annual budget for maintenance and improvement of GPC's buildings, grounds and equipment. The 2009 Friends of Winni goal is \$20,000. Use the response envelope to make either your Annual Membership contribution or your 2009 Friends of Winni gift, **or both**.

A Few Ways Can You Help and Have Fun

- Be a member in 2009
- Attend the Annual Meeting on October 3, 2009
- Make a Friends of Winni Gift
- Make a Gift of Stock
- Remember GPC in your will
- Organize a volunteer work group for 2010
- Invite your family and friends to join you at GPC
- Attend the 90th Anniversary Celebration on October 3, 2009

Geneva Point Center Inc. Call to the Annual Meeting of the Corporation Saturday, October 3, 2009, 11:00 am

The 2009 Annual Meeting of the members of Geneva Point Center Inc. will take place on Saturday, October 3, 2009 at Geneva Point Center, at 11:00 a.m. All members in good standing for 2009 are invited and encouraged to attend to hear the reports of Staff and Board and to participate in the election of new Board members. The meeting will be followed by the dedication of GPC's newest buildings and the 90th Anniversary Celebration. To speak or vote during the meeting you must be a member in good standing as signified by sending in your Annual Membership contribution.



Elderhostel at Geneva Point

For over 25 years

Upcoming Events

Fall 2009

Hike and Canoe in the Lakes Region of New Hampshire

September 13-18,
2009



June 2009 Photography Elderhostel group on
their way from GPC to North Conway.

New Hampshire Lakes Region Con- servation Project

September 13-18, 2009

Our Golden Pond: Astronomy, Canoeing & Natural History of Lake Winnepesaukee

September 20-24, 2009

Advanced Photography In Beautiful New Hampshire

September 27-October 2, 2009

Photography In Beautiful New Hampshire

September 27-October 2, 2009

Fall Foliage, Natural History, and New Hampshire Folk Lore

October 4-8, 2009

Spring 2010

Birding in the Lakes Region of New Hampshire

May 23-28, 2010

Photography in Beautiful New Hampshire I

May 23-28, 2010

Hike & Canoe in the Lakes Region of New Hampshire

June 13-18, 2010

Photography in Beautiful New Hampshire II

June 13-18, 2010

To register for any of these great programs, visit
<http://www.elderhostel.org> . Enter "Moultonborough" in
the advanced search box and click the "go" button.

Volunteer Opportunities Groups , Couples and Individuals

Volunteers make essential contributions of time, energy and skill, and have a lot of fun while sharing those gifts.. Volunteer work groups do an enormous amount to help clean up from the winter, make the buildings and grounds ready for the summer, prepare for the winter and do a variety of special projects. Long term volunteers play important roles on the summer staff. Volunteers make great hosts for Elderhostel programs and other events. Geneva Point is looking for more volunteer groups, couples or individuals. Volunteer groups typically come for 1-7 days and get involved in a wide variety of tasks and projects. Serving as Elderhostel hosts is a great role for adult couples or individuals, and you get to participate in the program as well. Some volunteers come and stay for the summer. If you are interested in learning more about volunteer opportunities, contact the GPC Office.

What Volunteers Can Do: gardening, lawn mowing, painting, curtain making, building repairs, trail maintenance, brush clearing, spring cleaning, fall clean-up and winter preparation, hosting Elderhostels and other programs, helping in the ice cream shop, assisting in the laundry, leading nature hikes, plumbing repairs, phone answering, kitchen help, equipment repair, remodeling and construction, and much more.



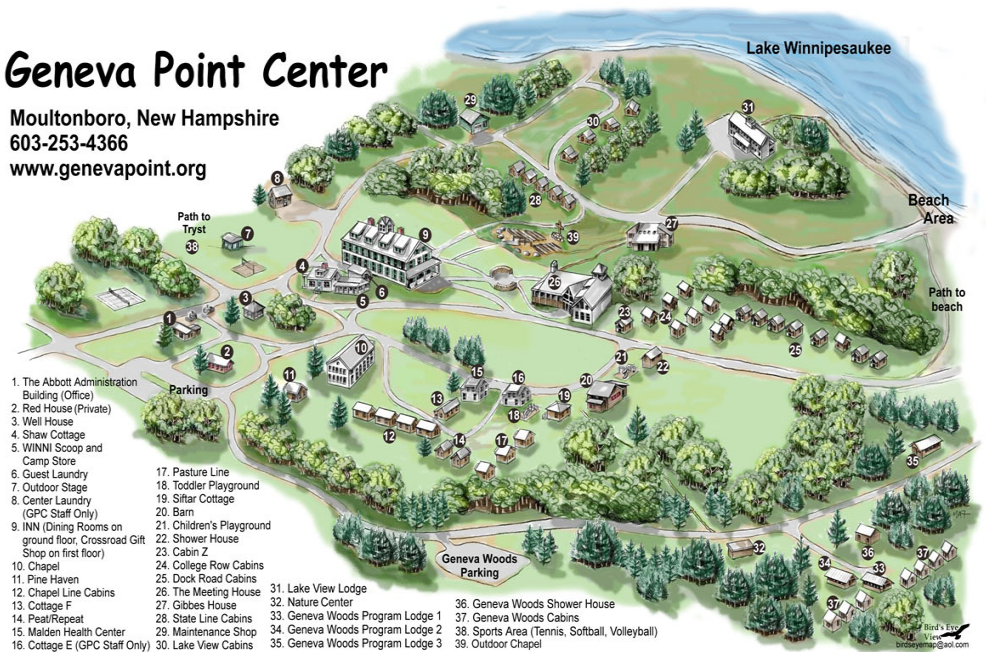
Welcome to Geneva Point Center

Who Comes to Geneva Point Center

Since 1919, Geneva Point Center has served as an ecumenical facility, open to all who seek an exceptional natural setting for the renewal of the spirit, mind and body. Geneva Point Center primarily serves communities of faith and other non-profit organizations for conferences, retreats, meetings, educational programs and youth camps. We provide services and facilities to support family and individual retreating as well as a distinctive Christian setting for special events like weddings. GPC also serves the New Hampshire Lakes region's community organizations and schools by hosting, meetings, training events, ceremonies and even high school proms.

Geneva Point Center

Moultonboro, New Hampshire
603-253-4366
www.genevapoint.org



The GPC Setting and Facilities

Geneva Point sits on nearly 200 acres, with just under a mile of shoreline on Lake Winnepesaukee, among the White Mountains of New Hampshire. Our three beaches look out to an idyllic panorama of crystal clear blue lake, islands and mountains. GPC has overnight accommodations for over 350 including motel type rooms, cottages, bunk houses and RV and tent camping areas. The Meeting House, built in 2000, is a year-round facility for meetings and conferences with multiple rooms and its own kitchen and dining space.

Now taking Reservations for 2010, 2011, 2012

GPC provides facilities and services for retreats, conferences, meetings and camps. For more information about facilities, rates and availability, send in the Reservation/Information Request Form or call (603) 253-4366 ext. 203.

Geneva Point Center Information Request

Name (Contact Person) _____ Group Name _____

Address _____

Address

City

St

Zip

Day Phone (____) _____ - _____ Evening Phone (____) _____ - _____ Cell (____) _____ - _____

Please contact me regarding: Group Event Family or Individual Retreat (Winni Week) Youth Event

Meeting Summer Youth Camp School Event Volunteer Work Group Volunteer for Elderhostel

Summer Volunteer Wedding Special Event Other _____

Prospective number of participants: _____

First Choice for Dates _____ Second Choice for Dates _____

Return to: Geneva Point Center, 108 Geneva Point Road, Moultonborough, NH 03254



Geneva Point Celebrates

Years Of Service **90** *1919-2009*

Saturday, October 3, 2009
At Geneva Point Center Meeting House and Grounds

Displays open at 10:00 am.

Annual Meeting at 11:00 a.m. followed the Dedication of the New Cabin Community

Lunch at Noon with the 90th Anniversary Celebration Program to Follow

Concert and Barn Dance following Anniversary Program

Optional Donation: \$15 per person

Come for lunch and the 90th Anniversary Program or you can make an entire day out of it. Limited space is available for overnight lodging at Geneva Point for the nights of Friday, October 2nd and Saturday, October 3rd. To make a reservation for the event or to reserve accommodations call Natalie at the GPC Office at (603) 253-4366 ext. 203.

Non-Profit
Presort Auto
North Conway, NH
03860

Geneva Point Center
108 Geneva Point Road
Moultonborough, NH 03254

